

ACE2 Mouse Monoclonal Antibody(2C1)

Catalog No.: RA10348

Basic Information

Information

Reactivity	H,M,R
Immunogen	Recombinant Protein
Host	Mouse
Isotype	IgG1
Storage Buffer & Condition	1mg/ml in PBS, pH 7.4, containing 0.02% sodium azide and 50% glycerol.
Observed MW	120-135KD

Applications

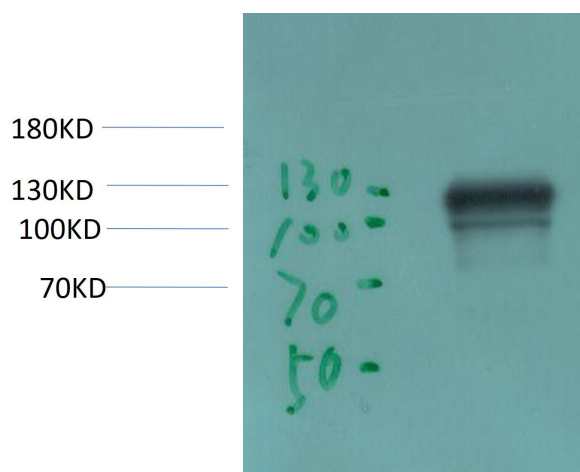
Recommended Dilution

WB	1:1,000-5,000
IHC	1:200-500
IF	1:200-500

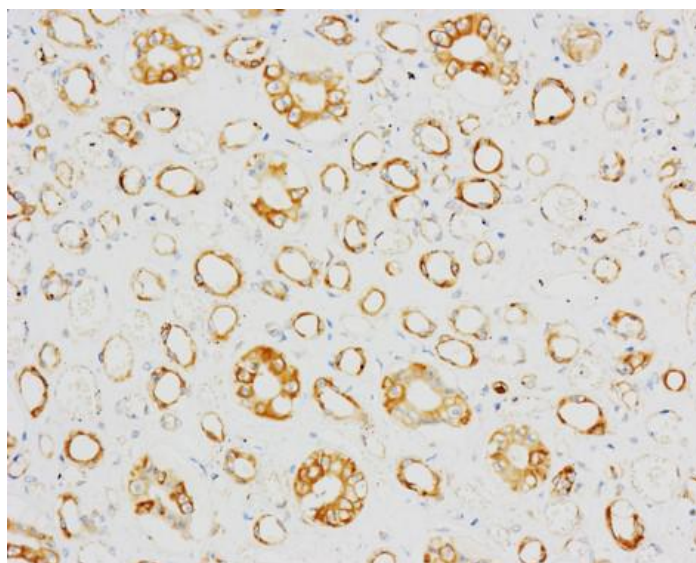
Preparation & Storage

Storage	Store at -20°C. Stable for one year from the date of shipment.
Shipping	Bule Ice

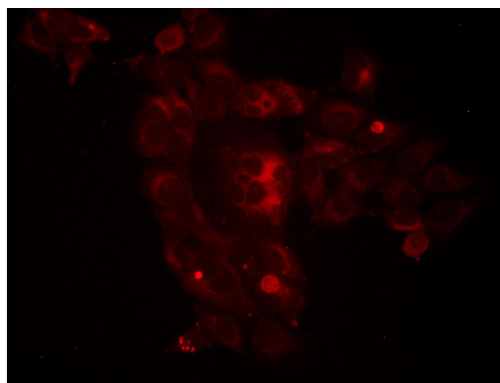
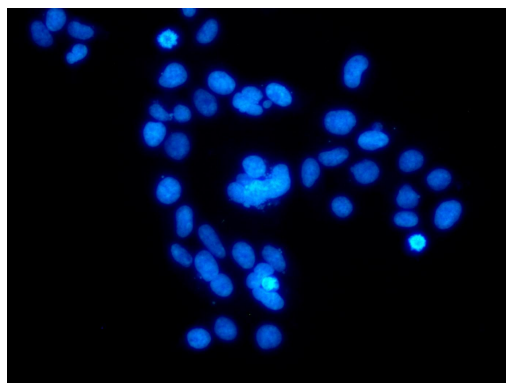
Experimental Data



Western blot analysis of 293T Transfected ACE2 Cell Lysate using ACE2 Mouse Monoclonal Antibody diluted at 1:50,000.



Immunohistochemical analysis of paraffin-embedded Human Kidney Tissue using ACE2 Mouse monoclonal antibody diluted at 1:200.



IF analysis of 293T Transfected ACE2 Cell Lysate using ACE2 Mouse Monoclonal Antibody diluted at 1:500.

Background

angiotensin I converting enzyme 2(ACE2) Homo sapiens The protein encoded by this gene belongs to the angiotensin-converting enzyme family of dipeptidyl carboxydipeptidases and has considerable homology to human angiotensin 1 converting enzyme. This secreted protein catalyzes the cleavage of angiotensin I into angiotensin 1-9, and angiotensin II into the vasodilator angiotensin 1-7. The organ- and cell-specific expression of this gene suggests that it may play a role in the regulation of cardiovascular and renal function, as well as fertility. In addition, the encoded protein is a functional receptor for the spike glycoprotein of the human coronaviruses SARS and HCoV-NL63.