

P70 S6 Kinase Mouse Monoclonal Antibody(8H8)

Catalog No.: RA10346

Basic Information

Information

| | |
|----------------------------|--|
| Reactivity | H |
| Immunogen | Recombinant Protein |
| Host | Mouse |
| Isotype | IgG1 |
| Storage Buffer & Condition | 1mg/ml in PBS, pH 7.4, containing 0.02% sodium azide and 50% glycerol. |
| Observed MW | 70,85KD |

Applications

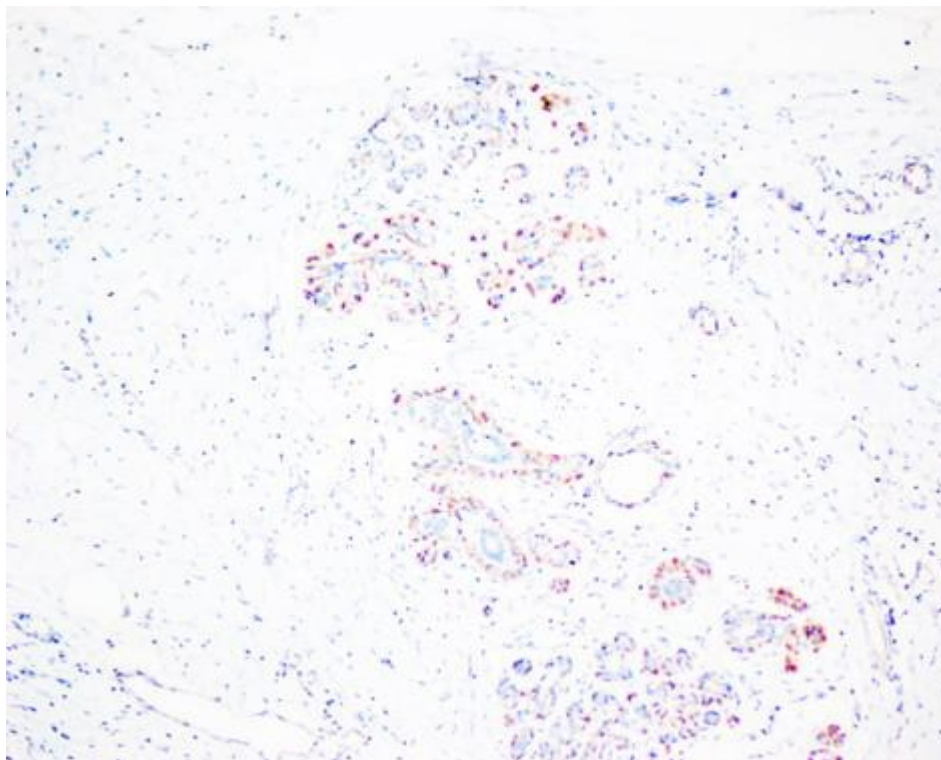
Recommended Dilution

| | |
|-----|-----------|
| IHC | 1:100-200 |
|-----|-----------|

Preparation & Storage

| | |
|----------|--|
| Storage | Store at -20°C. Stable for one year from the date of shipment. |
| Shipping | Bule Ice |

Experimental Data



Immunohistochemical analysis of paraffin-embedded Human Lung Carcinoma Tissue using P70 S6 Kinase Mouse monoclonal antibody diluted at 1:200.

Background

p70 S6 kinase is a mitogen activated Ser/Thr protein kinase that is required for cell growth and G1 cell cycle progression. Belongs to the protein kinase superfamily. AGC Ser/Thr protein kinase family. S6 kinase subfamily.