

Maspin Mouse Monoclonal Antibody(1D7)

Catalog No.: RA10343

Basic Information

Information

Reactivity	H,M,R
Immunogen	Synthetic Peptide
Host	Mouse
Isotype	IgG1
Storage Buffer & Condition	1mg/ml in PBS, pH 7.4, containing 0.02% sodium azide and 50% glycerol.
Observed MW	~42KD

Applications

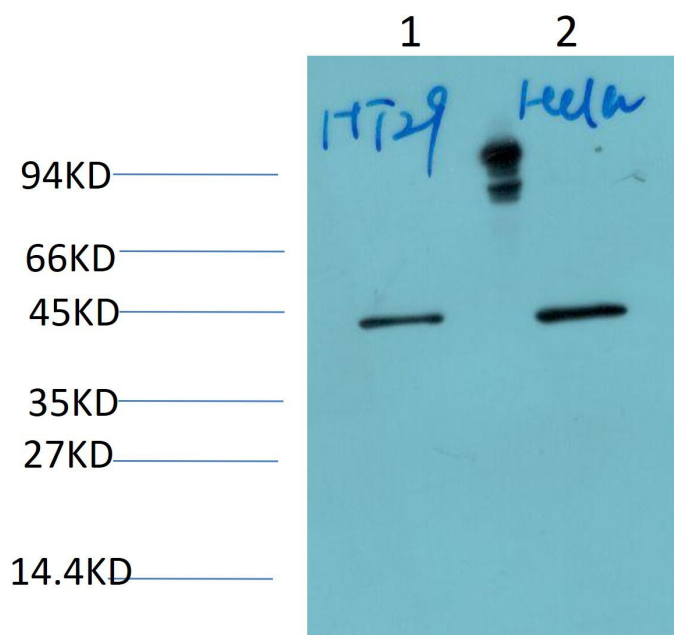
Recommended Dilution

WB	1:1,000-2,000
----	---------------

Preparation & Storage

Storage	Store at -20°C. Stable for one year from the date of shipment.
Shipping	Bule Ice

Experimental Data



Western blot analysis of 1)HT-29 Cell, 2)Hela Cell Lysate using Maspin Mouse Monoclonal Antibody diluted at 1:2,000.

Background

function:Tumor suppressor. It blocks the growth,invasion,and metastatic properties of mammary tumors. As it does not undergo the S (stressed) to R (relaxed) conformational transition characteristic of active serpins,it exhibits no serine protease inhibitory ctivity.,similarity:Belongs to the serpin family. Ov-serpin subfamily.,tissue specificity:Normal mammary epithelial cells.