

P27 Kip1 Mouse Monoclonal Antibody(1A7)

Catalog No.: RA10298

Basic Information

Information

Reactivity	H,M,R
Immunogen	Recombinant Protein
Host	Mouse
Isotype	IgG1
Storage Buffer & Condition	1mg/ml in PBS, pH 7.4, containing 0.02% sodium azide and 50% glycerol.
Observed MW	27KD

Applications

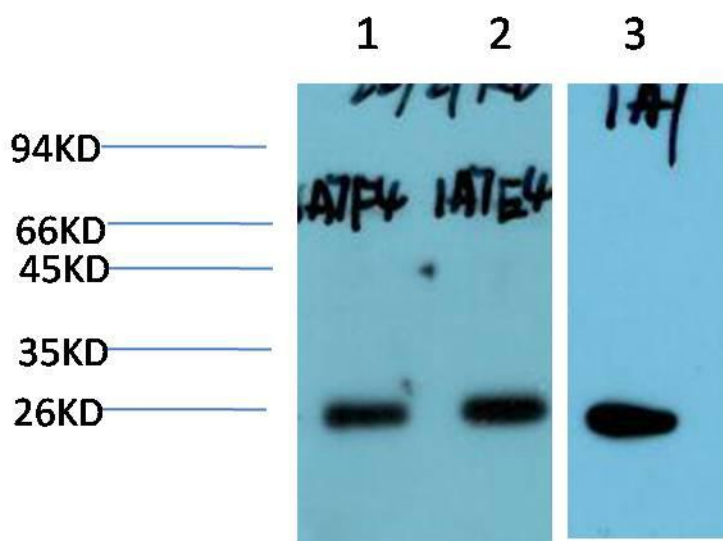
Recommended Dilution

WB	1:2,000-5,000
----	---------------

Preparation & Storage

Storage	Store at -20°C. Stable for one year from the date of shipment.
Shipping	Bule Ice

Experimental Data



Western blot analysis of 1)MCF7 Cell, 2)HepG2 Cell, 3) C2C12 Cell Lysate using p27 Kip1 Mouse Monoclonal mAb diluted at 1:2,000.

Background

Cyclin dependent kinase inhibitor 1B(CDKN1B) Homo sapiens This gene encodes a cyclin-dependent kinase inhibitor, which shares a limited similarity with CDK inhibitor CDKN1A/p21. The encoded protein binds to and prevents the activation of cyclin E-CDK2 or cyclin D-CDK4 complexes, and thus controls the cell cycle progression at G1. The degradation of this protein, which is triggered by its CDK dependent phosphorylation and subsequent ubiquitination by SCF complexes, is required for the cellular transition from quiescence to the proliferative state.