

Ubiquitin Mouse Monoclonal Antibody(2G3)

Catalog No.: RA10290

Basic Information

Information

Reactivity	ALL
Immunogen	Synthetic Peptide
Host	Mouse
Isotype	IgG1
Storage Buffer & Condition	1mg/ml in PBS, pH 7.4, containing 0.02% sodium azide and 50% glycerol.
Observed MW	ALL

Applications

Recommended Dilution

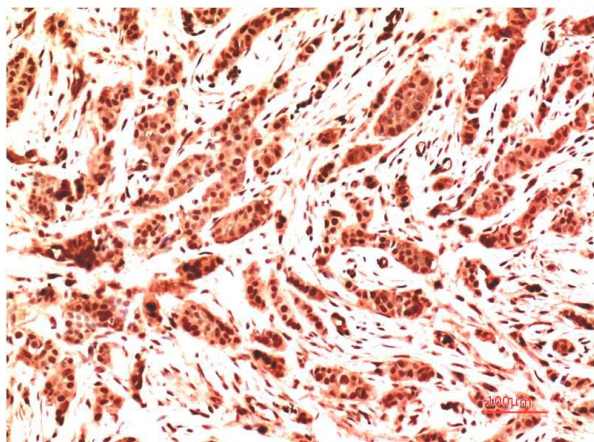
WB	1:1,000-2,000
IHC	1:200-500

Preparation & Storage

Storage	Store at -20°C. Stable for one year from the date of shipment.
Shipping	Bule Ice

Experimental Data

错误！未指定文件名。



Western blot analysis of 1)Hela Cell Lysate, 2)A431 Cell Lysate using Mouse mAb diluted at 1:2,000.

Immunohistochemical analysis of paraffin-embedded Human Breast Carcinoma Tissue using Ubiquitin Mouse Monoclonal antibody diluted at 1:500.

Background

Ubiquitin is a conserved polypeptide unit that plays an important role in the ubiquitin-proteasome pathway. Ubiquitin can be covalently linked to many cellular proteins by the ubiquitination process, which targets proteins for degradation by the 26S proteasome.