

CDK5 Mouse Monoclonal Antibody(3D1)

Catalog No.: RA10289

Basic Information

Information

| | |
|----------------------------|--|
| Reactivity | H,M,R |
| Immunogen | Recombinant Protein |
| Host | Mouse |
| Isotype | IgG1 |
| Storage Buffer & Condition | 1mg/ml in PBS, pH 7.4, containing 0.02% sodium azide and 50% glycerol. |
| Observed MW | 33KD |

Applications

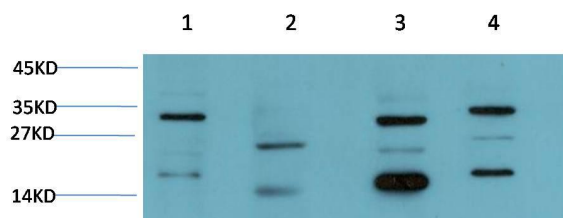
Recommended Dilution

| | |
|-----|---------------|
| WB | 1:1,000-2,000 |
| IHC | 1:200-500 |

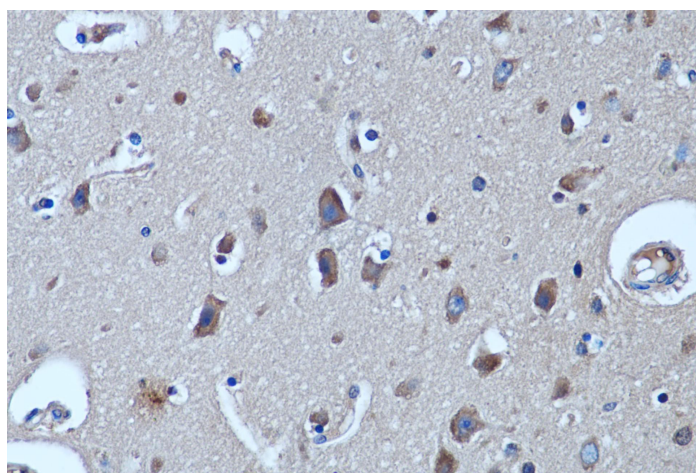
Preparation & Storage

| | |
|----------|--|
| Storage | Store at -20°C. Stable for one year from the date of shipment. |
| Shipping | Bule Ice |

Experimental Data



Western blot analysis of 1)Hela Cell,2)Jurkat Cell,3)Mouse Brain Tissue, 4)Rat Brain Tissue Lysate using CDK5 Mouse Monoclonal antibody diluted at 1:2,000



Immunohistochemical analysis of paraffin-embedded Human Brain Tissue using CDK5 Mouse Monoclonal antibody diluted at 1:200.

Background

cyclin dependent kinase 5(CDK5) Homo sapiens This gene encodes a proline-directed serine/threonine kinase that is a member of the cyclin-dependent kinase family of proteins. Unlike other members of the family,the protein encoded by this gene does not directly control cell cycle regulation. Instead the protein,which is predominantly expressed at high levels in mammalian postmitotic central nervous system neurons,functions in diverse processes such as synaptic plasticity and neuronal migration through phosphorylation of proteins required for cytoskeletal organization,endocytosis and exocytosis,and apoptosis. In humans,an allelic variant of the gene that results in undetectable levels of the protein has been associated with lethal autosomal recessive lissencephaly-7. Alternative splicing results in multiple transcript variants.