

14-3-3 eta Mouse Monoclonal Antibody(5B2)**Catalog No.: RA10280****Basic Information****Information**

Reactivity	H,M,R
Immunogen	Synthetic Peptide
Host	Mouse
Isotype	IgG1
Storage Buffer & Condition	1mg/ml in PBS, pH 7.4, containing 0.02% sodium azide and 50% glycerol.
Observed MW	28KD

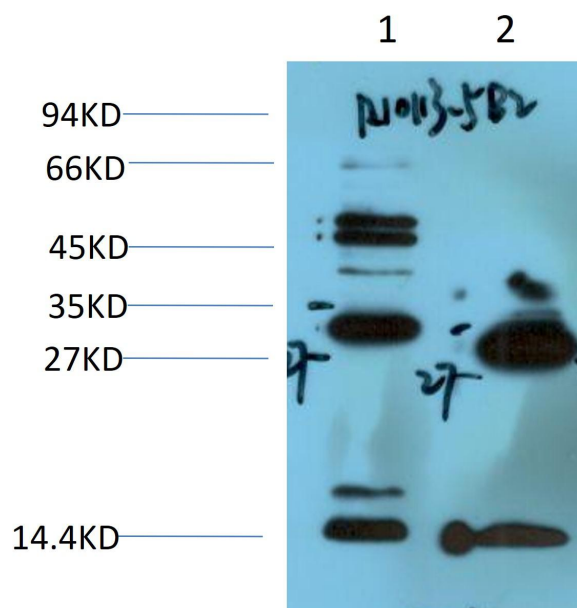
Applications**Recommended Dilution**

WB	1:2,000-10,000
IHC	1:100-200

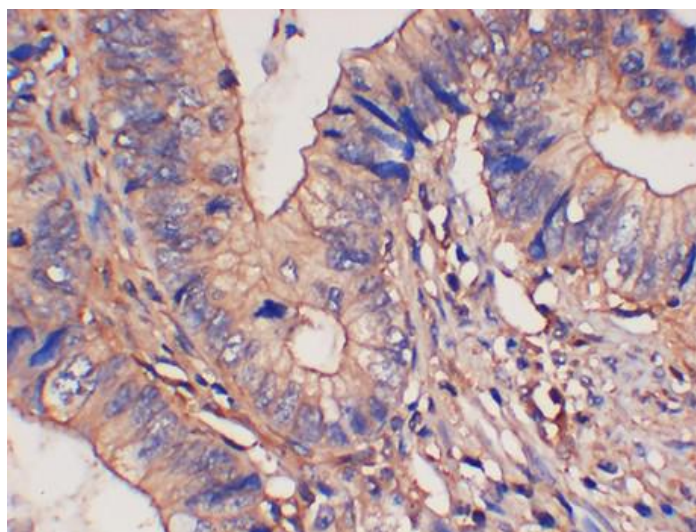
Preparation & Storage

Storage	Store at -20°C. Stable for one year from the date of shipment.
Shipping	Bule Ice

Experimental Data



Western blot analysis of 1)Rat Brain Tissue, 2)Hela Cell Lysate using 14-3-3 eta Mouse mAb diluted at 1:2000.



Immunohistochemical analysis of paraffin-embedded Human Colon Carcinoma Tissue using 14-3-3 eta Mouse mAb diluted at 1:200.

Background

tyrosine 3-monooxygenase/tryptophan 5-monooxygenase activation protein eta(YWHAH) Homo sapiens This gene product belongs to the 14-3-3 family of proteins which mediate signal transduction by binding to phosphoserine-containing proteins. This highly conserved protein family is found in both plants and mammals, and this protein is 99% identical to the mouse, rat and bovine orthologs. This gene contains a 7 bp repeat sequence in its 5' UTR, and changes in the number of this repeat have been associated with early-onset schizophrenia and psychotic bipolar disorder.