

Lamin B1(Cleaved) Mouse Monoclonal Antibody(7B7)

Catalog No.: RA10275

Basic Information

Information

Reactivity	H,M,R
Immunogen	Recombinant Protein
Host	Mouse
Isotype	IgG1
Storage Buffer & Condition	1mg/ml in PBS, pH 7.4, containing 0.02% sodium azide and 50% glycerol.
Observed MW	68KD

Applications

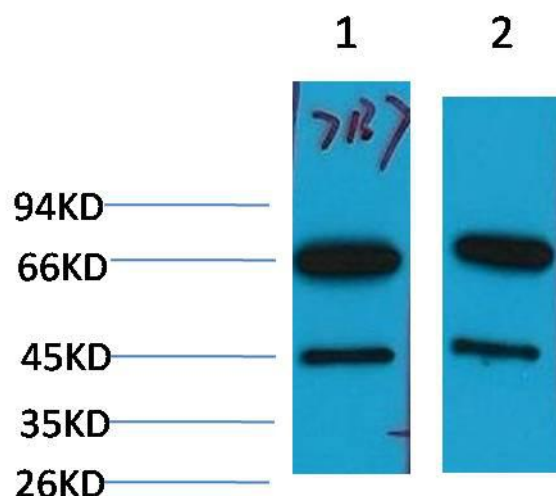
Recommended Dilution

WB	1:1,000-2,000
----	---------------

Preparation & Storage

Storage	Store at -20°C. Stable for one year from the date of shipment.
Shipping	Bule Ice

Experimental Data



Western blot analysis of 1)293T Cell Lysate, 2)Hela Cell Lysate, using Lamin B1(Cleaved) Mouse mAb diluted at 1:2000.

Background

The nuclear lamina consists of a two-dimensional matrix of proteins located next to the inner nuclear membrane. The lamin family of proteins make up the matrix and are highly conserved in evolution. During mitosis, the lamina matrix is reversibly disassembled as the lamin proteins are phosphorylated. Lamin proteins are thought to be involved in nuclear stability, chromatin structure and gene expression. Vertebrate lamins consist of two types, A and B. This gene encodes one of the two B type proteins, B1.