

TFE3 Mouse Monoclonal Antibody(8B4)

Catalog No.: RA10264

Basic Information

Information

| | |
|----------------------------|--|
| Reactivity | H |
| Immunogen | Synthetic Peptide |
| Host | Mouse |
| Isotype | IgG1 |
| Storage Buffer & Condition | 1mg/ml in PBS, pH 7.4, containing 0.02% sodium azide and 50% glycerol. |
| Observed MW | 62KD |

Applications

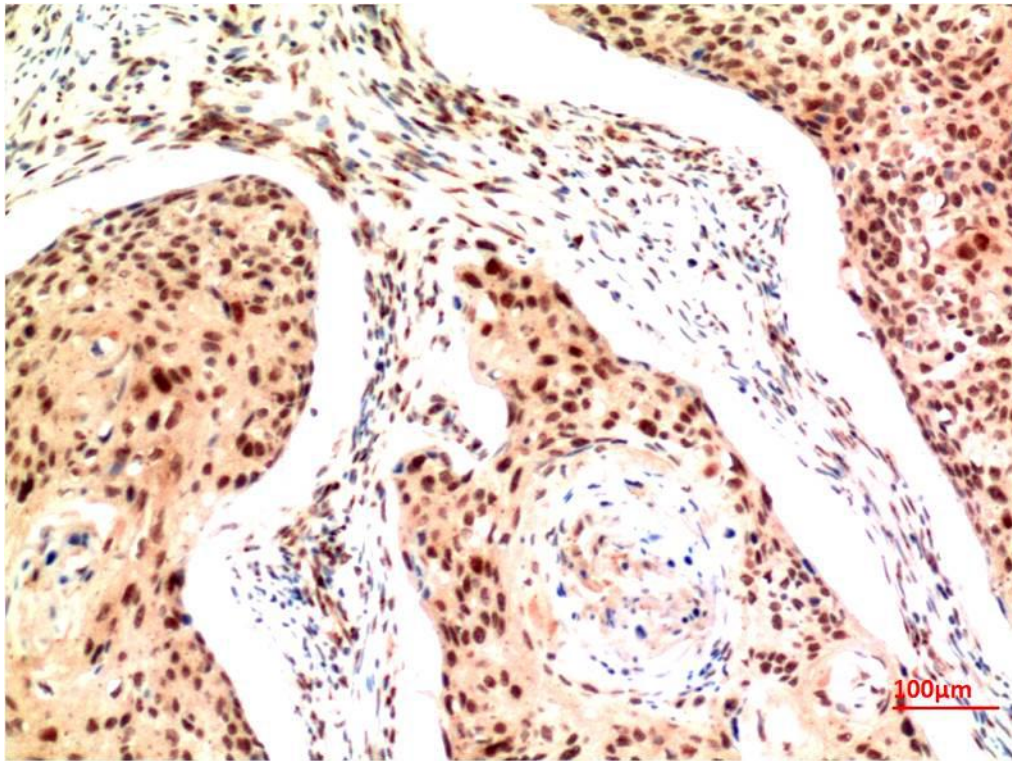
Recommended Dilution

| | |
|-----|-----------|
| IHC | 1:100-200 |
|-----|-----------|

Preparation & Storage

| | |
|----------|--|
| Storage | Store at -20°C. Stable for one year from the date of shipment. |
| Shipping | Bule Ice |

Experimental Data



Immunohistochemical analysis of paraffin-embedded Human Esophageal Squamous Cell Carcinoma Tissue using TFE3 Mouse mAb diluted at 1:200.

Background

transcription factor binding to IGHM enhancer 3(TFE3) Homo sapiens This gene encodes a basic helix-loop-helix domain-containing transcription factor that binds MUE3-type E-box sequences in the promoter of genes. The encoded protein promotes the expression of genes downstream of transforming growth factor beta (TGF-beta) signaling. This gene may be involved in chromosomal translocations in renal cell carcinomas and other cancers, resulting in the production of fusion proteins. Translocation partners include PRCC (papillary renal cell carcinoma), NONO (non-POU domain containing, octamer-binding), and ASPSCR1 (alveolar soft part sarcoma chromosome region, candidate 1), among other genes.