

Claudin-7 Mouse Monoclonal Antibody(3F7)

Catalog No.: RA10259

Basic Information

Information

Reactivity	H,M
Immunogen	Synthetic Peptide
Host	Mouse
Isotype	IgG1
Storage Buffer & Condition	1mg/ml in PBS, pH 7.4, containing 0.02% sodium azide and 50% glycerol.
Observed MW	25KD

Applications

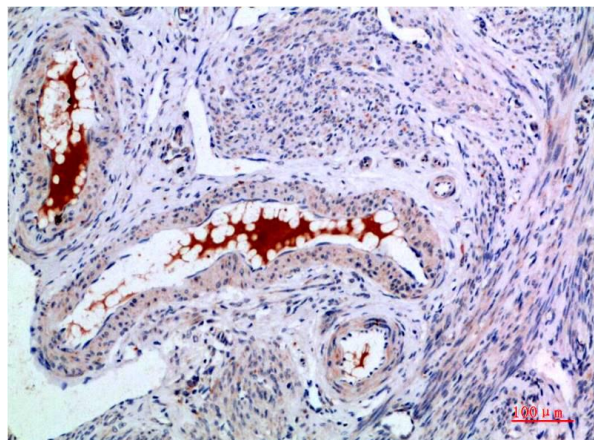
Recommended Dilution

IHC	1:100-200
-----	-----------

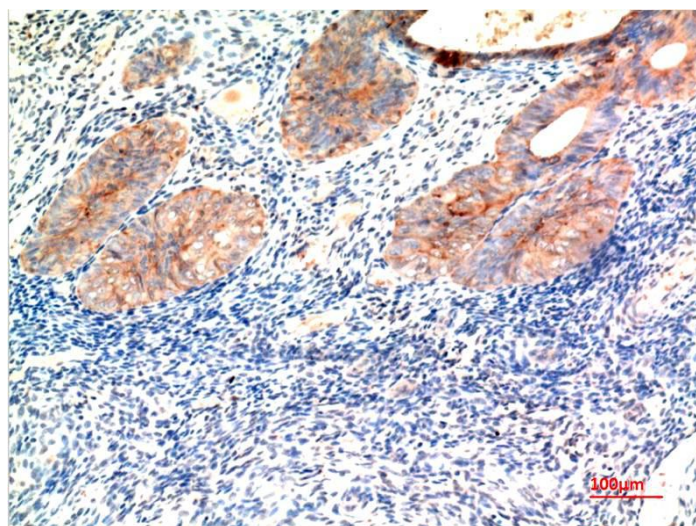
Preparation & Storage

Storage	Store at -20°C. Stable for one year from the date of shipment.
Shipping	Bule Ice

Experimental Data



Immunohistochemical analysis of paraffin-embedded Human Endometrial Carcinoma Tissue using Claudin-7 Mouse mAb diluted at 1:200



Immunohistochemical analysis of paraffin-embedded Human Endometrial Carcinoma Tissue using Claudin-7 Mouse mAb diluted at 1:200.

Background

claudin 7(CLDN7) Homo sapiens This gene encodes a member of the claudin family. Claudins are integral membrane proteins and components of tight junction strands. Tight junction strands serve as a physical barrier to prevent solutes and water from passing freely through the paracellular space between epithelial or endothelial cell sheets, and also play critical roles in maintaining cell polarity and signal transductions. Differential expression of this gene has been observed in different types of malignancies, including breast cancer, ovarian cancer, hepatocellular carcinomas, urinary tumors, prostate cancer, lung cancer, head and neck cancers, thyroid carcinomas, etc.