

ErbB2-HER-2 Mouse Monoclonal Antibody (11H9)

Catalog No.: RA10238

Basic Information

Information

Reactivity	H,M,R
Immunogen	Synthetic Peptide
Host	Mouse
Isotype	IgG1
Storage Buffer & Condition	1mg/ml in PBS, pH 7.4, containing 0.02% sodium azide and 50% glycerol.
Observed MW	138KD

Applications

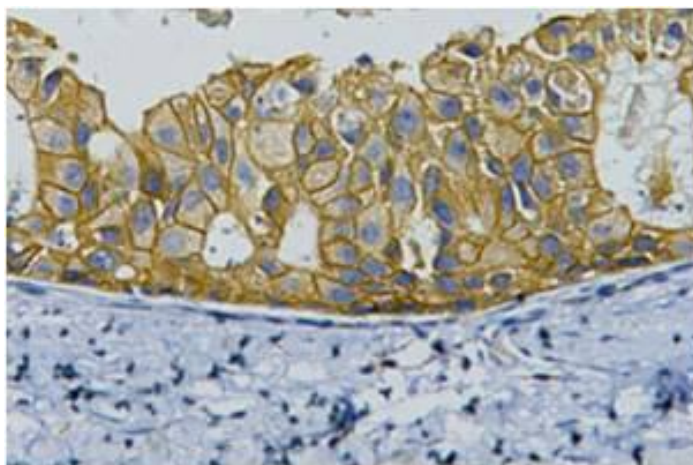
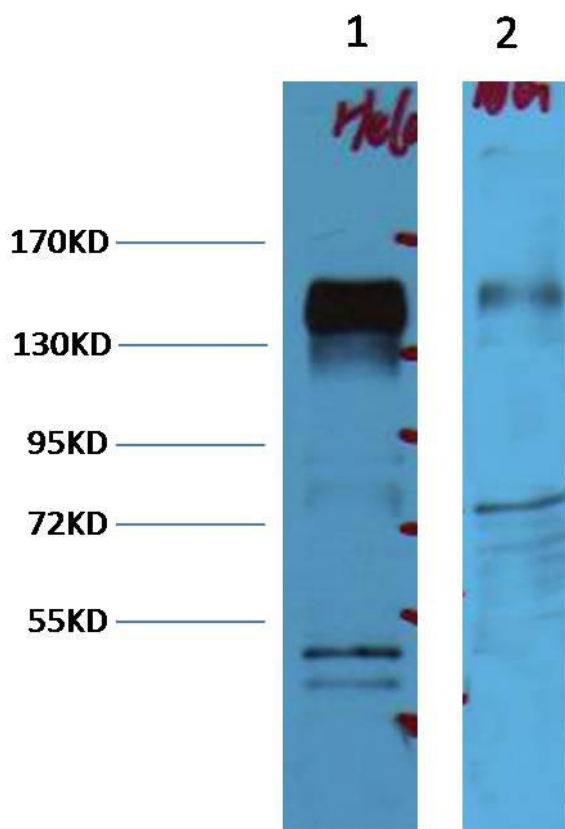
Recommended Dilution

WB	1:2,000-4,000
IHC	1:200

Preparation & Storage

Storage	Store at -20°C. Stable for one year from the date of shipment.
Shipping	Bule Ice

Experimental Data



Western blot analysis of 1)HeLa, 2)Mouse Brain with ErbB-2/HER-2 mAb diluted at 1:4,000.

IHC staining of Human breast cancer tissue with ErbB-2/HER-2 mouse mAb diluted at 1:200.

Background

ErbB 2 is a receptor tyrosine kinase of the ErbB 2 family. It is closely related in structure to the epidermal growth factor receptor. ErbB 2 oncoprotein is detectable in a proportion of breast and other adenocarcinomas, as well as transitional cell carcinomas. In the case of breast cancer, expression determined by immunohistochemistry has been shown to be associated with poor prognosis.