

ATG7 Mouse Monoclonal Antibody(3D6)

Catalog No.: RA10221

Basic Information

Information

| | |
|----------------------------|------------------------------------------------------------------------|
| Reactivity | H,M,R |
| Immunogen | Recombinant Protein |
| Host | Mouse |
| Isotype | IgG1 |
| Storage Buffer & Condition | 1mg/ml in PBS, pH 7.4, containing 0.02% sodium azide and 50% glycerol. |
| Observed MW | 78KD |

Applications

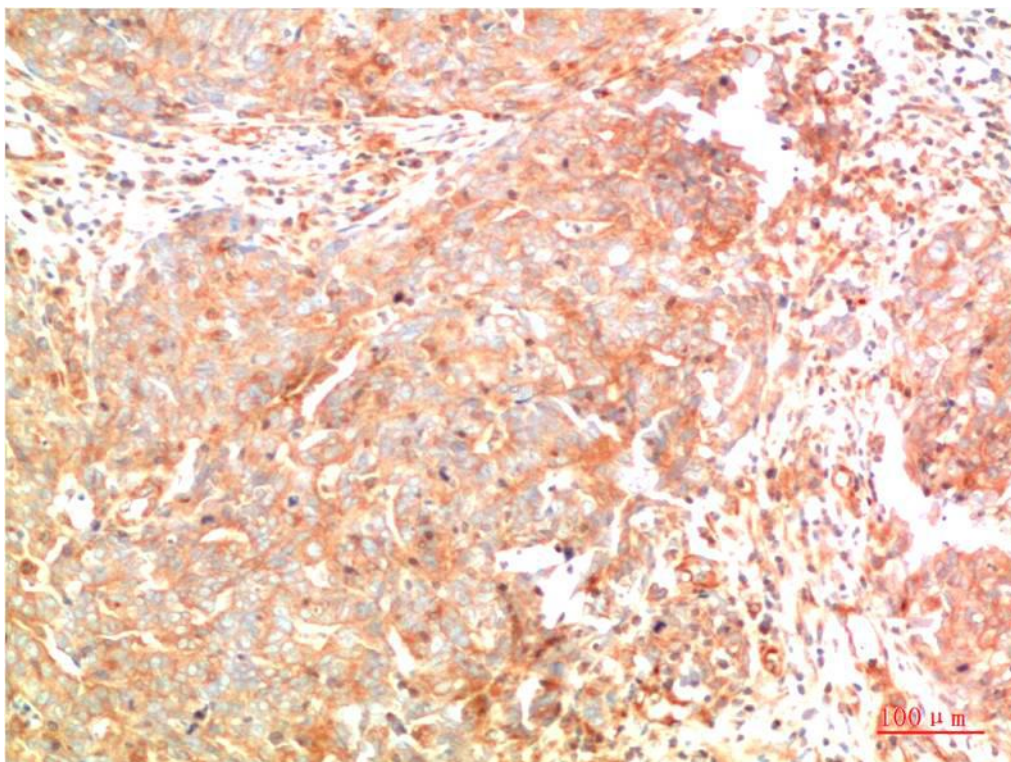
Recommended Dilution

| | |
|-----|-----------|
| IHC | 1:100-200 |
|-----|-----------|

Preparation & Storage

| | |
|----------|----------------------------------------------------------------|
| Storage | Store at -20°C. Stable for one year from the date of shipment. |
| Shipping | Bule Ice |

Experimental Data



Immunohistochemical analysis of paraffin-embedded Human Breast Carcinoma Tissue using ATG7 Mouse mAb diluted at 1:200.

Background

The molecular machinery of autophagy was largely discovered in yeast and referred to as autophagy-related (Atg) genes. Formation of the autophagosome involves a ubiquitin-like conjugation system in which Atg12 is covalently bound to Atg5 and targeted to autophagosome vesicles. This conjugation reaction is mediated by the ubiquitin E1-like enzyme Atg7 and the E2-like enzyme Atg10.