

p38 Mouse Monoclonal Antibody(8C11)

Catalog No.: RA10206

Basic Information

Information

Reactivity	H,M,R
Immunogen	Synthetic Peptide
Host	Mouse
Isotype	IgG1
Storage Buffer & Condition	1mg/ml in PBS, pH 7.4, containing 0.02% sodium azide and 50% glycerol.
Observed MW	42KD

Applications

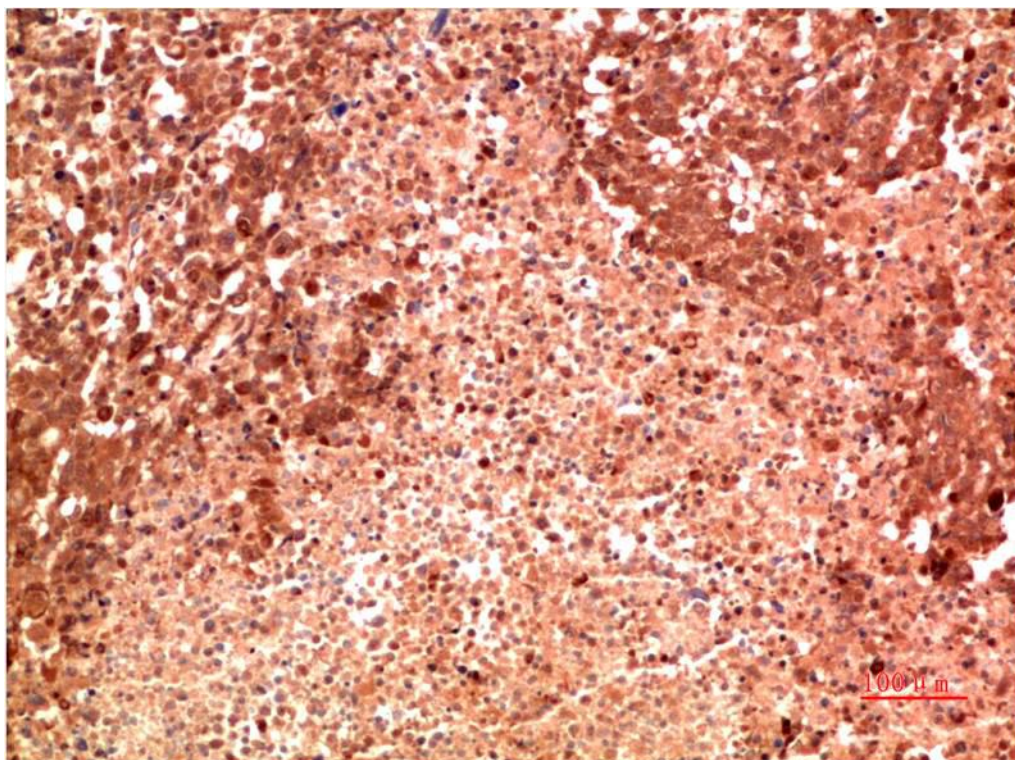
Recommended Dilution

IHC	1:100-200
-----	-----------

Preparation & Storage

Storage	Store at -20°C. Stable for one year from the date of shipment.
Shipping	Bule Ice

Experimental Data



Immunohistochemical analysis of paraffin-embedded Human Lung Carcinoma Tissue using P38 Mouse mAb diluted at 1:200.

Background

p38 MAP kinase (MAPK) is the mammalian orthologue of the yeast HOG kinase that participates in a signaling cascade controlling cellular responses to cytokines and stress. Isoforms p38 α , p38 β , p38 γ and p38 δ have been identified. p38 MAPK is activated by a variety of cellular stresses including osmotic shock, inflammatory cytokines, lipopolysaccharide (LPS), UV light, and growth factors.