

# ATM Mouse Monoclonal Antibody(4C8)

Catalog No.: RA10180

## Basic Information

### Information

|                            |  |
|----------------------------|--|
| Reactivity                 | H,M,R  |
| Immunogen                  | Synthetic Peptide  |
| Host                       | Mouse  |
| Isotype                    | IgG1   |
| Storage Buffer & Condition | 1mg/ml in PBS, pH 7.4, containing 0.02% sodium azide and 50% glycerol. |
| Observed MW                | 370KD  |

### Applications

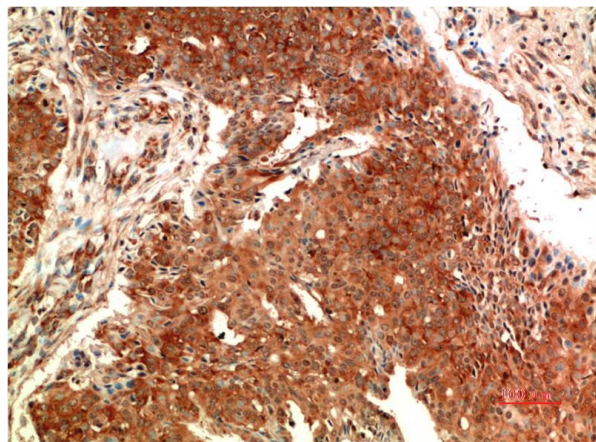
### Recommended Dilution

|     |           |
|-----|-----------|
| IHC | 1:100-200 |
|-----|-----------|

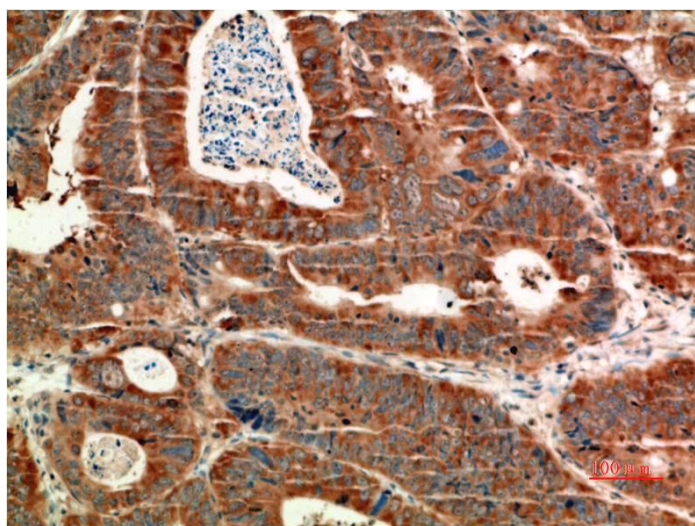
## Preparation & Storage

|          |  |
|----------|--|
| Storage  | Store at -20°C. Stable for one year from the date of shipment. |
| Shipping | Bule Ice   |

## Experimental Data



Immunohistochemical analysis of paraffin-embedded Human Breast Carcinoma Tissue using ATM Mouse mAb diluted at 1:200.



Immunohistochemical analysis of paraffin-embedded Human Colon Carcinoma Tissue using ATM Mouse mAb diluted at 1:200.

## Background

Ataxia telangiectasia mutated kinase (ATM) is a serine/threonine kinase that regulates cell cycle checkpoints and DNA repair. ATM kinase regulates a number of proteins involved in cell cycle checkpoint control, apoptosis, and DNA repair.