

# ATM Mouse Monoclonal Antibody(1D1)

Catalog No.: RA10168

## Basic Information

### Information

Reactivity	H,M,R
Immunogen	Recombinant Protein
Host	Mouse
Isotype	IgG1
Storage Buffer & Condition	1mg/ml in PBS, pH 7.4, containing 0.02% sodium azide and 50% glycerol.
Observed MW	350KD

### Applications

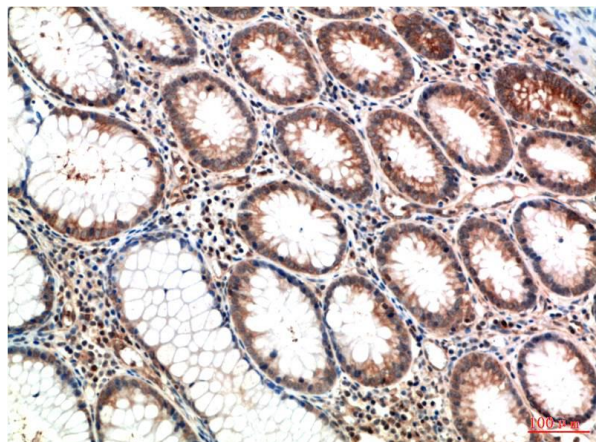
### Recommended Dilution

IHC	1:100-200
-----	-----------

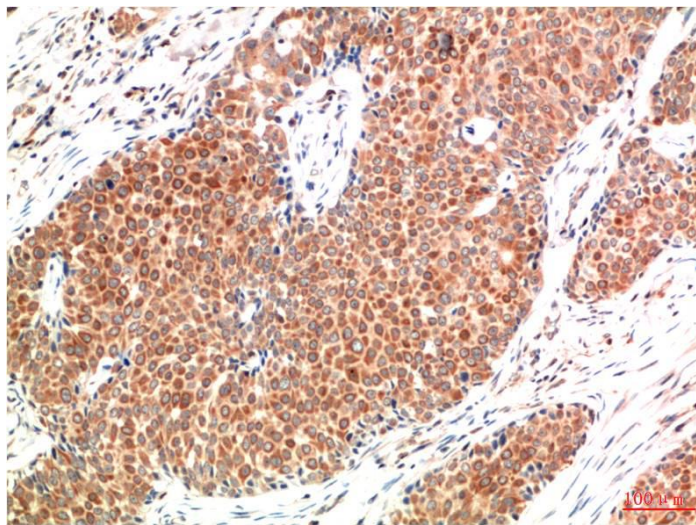
## Preparation & Storage

Storage	Store at -20°C. Stable for one year from the date of shipment.
Shipping	Bule Ice

## Experimental Data



Immunohistochemical analysis of paraffin-embedded Human Colon Carcinoma Tissue using ATM Mouse mAb diluted at 1:200.



Immunohistochemical analysis of paraffin-embedded Human Breast Carcinoma Tissue using ATM Mouse mAb diluted at 1:200.

## Background

Ataxia telangiectasia mutated kinase (ATM) is a serine/threonine kinase that regulates cell cycle checkpoints and DNA repair. ATM kinase regulates a number of proteins involved in cell cycle checkpoint control, apoptosis, and DNA repair.