

# MLKL(Phospho Ser358) Mouse Monoclonal Antibody(6B4)

Catalog No.: RA10157

## Basic Information

### Information

|                            |  |
|----------------------------|--|
| Reactivity                 | H  |
| Immunogen                  | Synthetic Peptide  |
| Host                       | Mouse  |
| Isotype                    | IgG1   |
| Storage Buffer & Condition | 1mg/ml in PBS, pH 7.4, containing 0.02% sodium azide and 50% glycerol. |
| Observed MW                | 54KD   |

### Applications

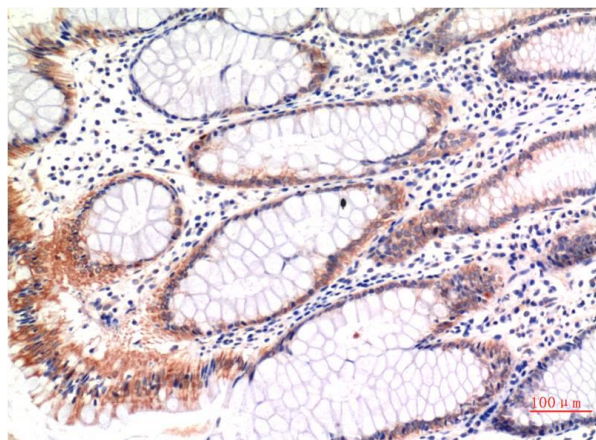
### Recommended Dilution

|     |           |
|-----|-----------|
| IHC | 1:100-200 |
|-----|-----------|

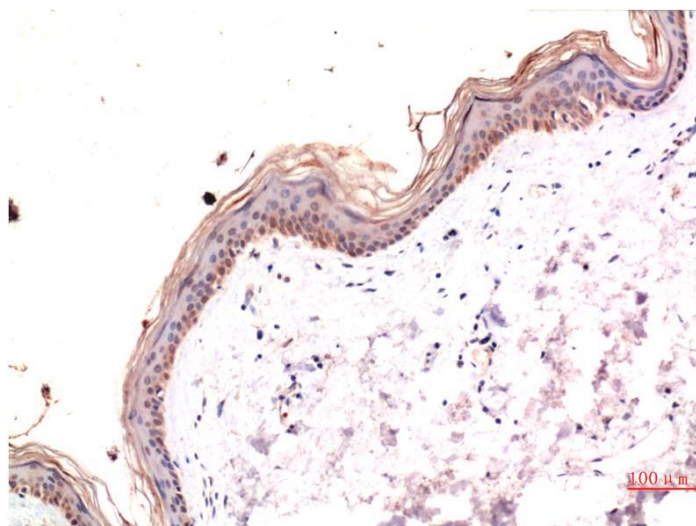
## Preparation & Storage

|          |  |
|----------|--|
| Storage  | Store at -20°C. Stable for one year from the date of shipment. |
| Shipping | Bule Ice   |

## Experimental Data



Immunohistochemical analysis of paraffin-embedded Human Colon Carcinoma Tissue using Phospho-MLKL S358 Mouse mAb diluted at 1:200.



Immunohistochemical analysis of paraffin-embedded Human Skin Tissue using Phospho-MLKL S358 Mouse mAb diluted at 1:200.

## Background

Mixed lineage kinase domain-like protein (MLKL) is a pseudokinase that was identified as downstream target of RIP3 in the necroptosis pathway. During necroptosis RIP3 is phosphorylated at Ser227, which recruits MLKL and leads to its phosphorylation at Thr357 and Ser358.