

# CHOP Mouse Monoclonal Antibody(2B1)

Catalog No.: RA10154

## Basic Information

### Information

Reactivity	H,M,R
Immunogen	Synthetic Peptide
Host	Mouse
Isotype	IgG1
Storage Buffer & Condition	1mg/ml in PBS, pH 7.4, containing 0.02% sodium azide and 50% glycerol.
Observed MW	27KD

### Applications

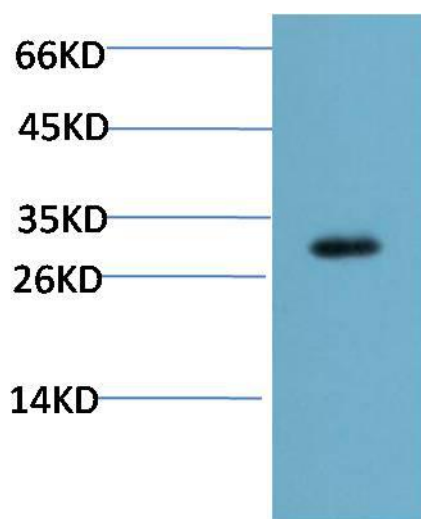
### Recommended Dilution

WB	1:1,000-2,000
IHC	1:100-200

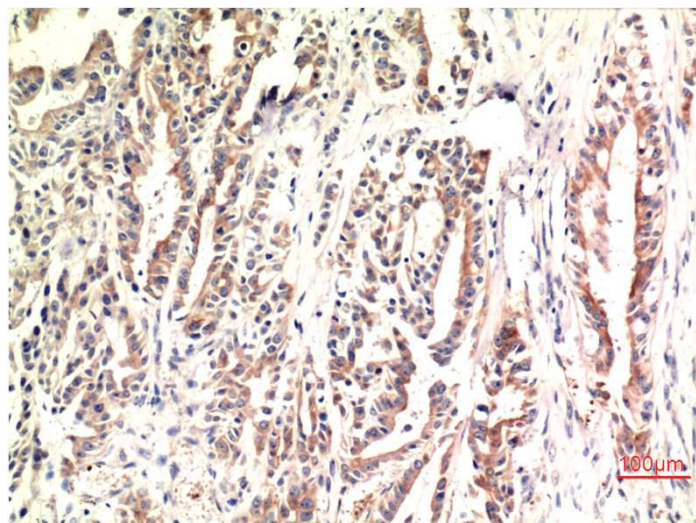
## Preparation & Storage

Storage	Store at -20°C. Stable for one year from the date of shipment.
Shipping	Bule Ice

## Experimental Data



Western blot analysis of Mouse Liver Tissue Lysate using CHOP Mouse mAb diluted at 1:2000.



Immunohistochemical analysis of paraffin-embedded Human Stomach Carcinoma Tissue using CHOP Mouse mAb diluted at 1:200.

## Background

CHOP was identified as a C/EBP-homologous protein that inhibits C/EBP and LAP in a dominant-negative manner. CHOP expression is induced by certain cellular stresses including starvation and the induced CHOP suppresses cell cycle progression from G1 to S phase.