

Epsilon Tubulin Mouse Monoclonal Antibody(2B3)

Catalog No.: RA10140

Basic Information

Information

Reactivity	H,M,R
Immunogen	Synthetic Peptide
Host	Mouse
Isotype	IgG1
Storage Buffer & Condition	1mg/ml in PBS, pH 7.4, containing 0.02% sodium azide and 50% glycerol.
Observed MW	55KD

Applications

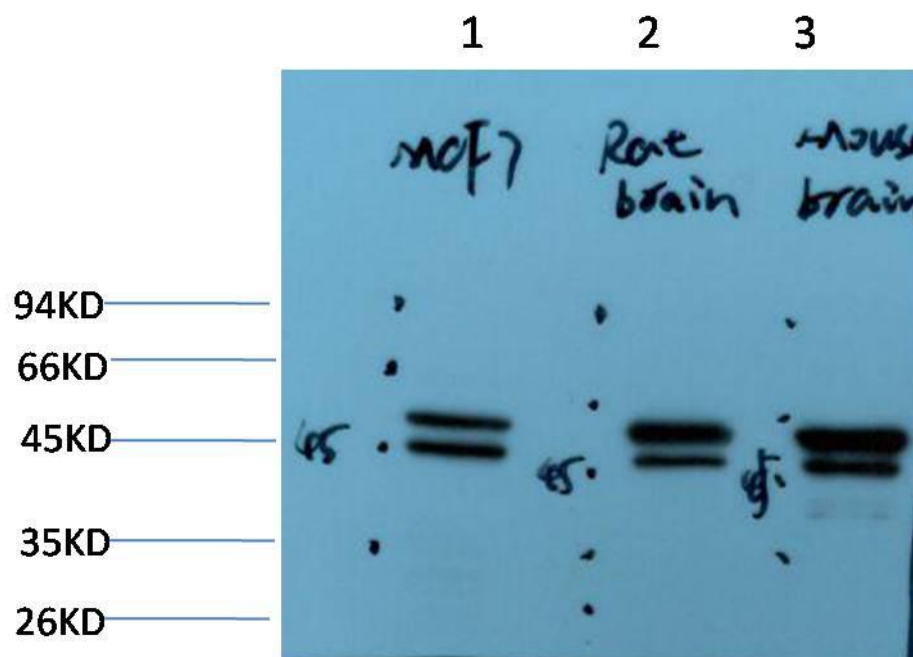
Recommended Dilution

WB	1:1,000-2,000
----	---------------

Preparation & Storage

Storage	Store at -20°C. Stable for one year from the date of shipment.
Shipping	Bule Ice

Experimental Data



Western blot analysis of 1)MCF7Cell Lysate, 2)Rat Brain Tissue Lysate, 3)Mouse Brain Tissue Lysate using Epsilon Tubulin Mouse mAb diluted at 1:2000.