

# Gamma Tubulin Mouse Monoclonal Antibody(7B1)

Catalog No.: RA10138

## Basic Information

### Information

Reactivity	H,M,R
Immunogen	Synthetic Peptide
Host	Mouse
Isotype	IgG1
Storage Buffer & Condition	1mg/ml in PBS, pH 7.4, containing 0.02% sodium azide and 50% glycerol.
Observed MW	50KD

### Applications

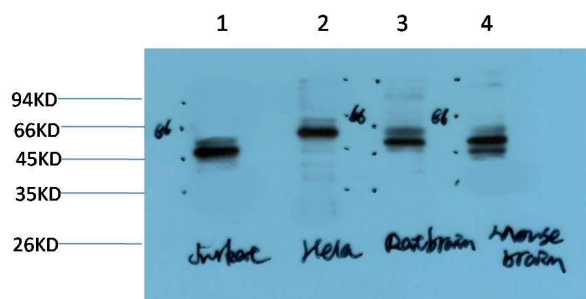
### Recommended Dilution

WB	1:1,000-2,000
IHC	1:100-200

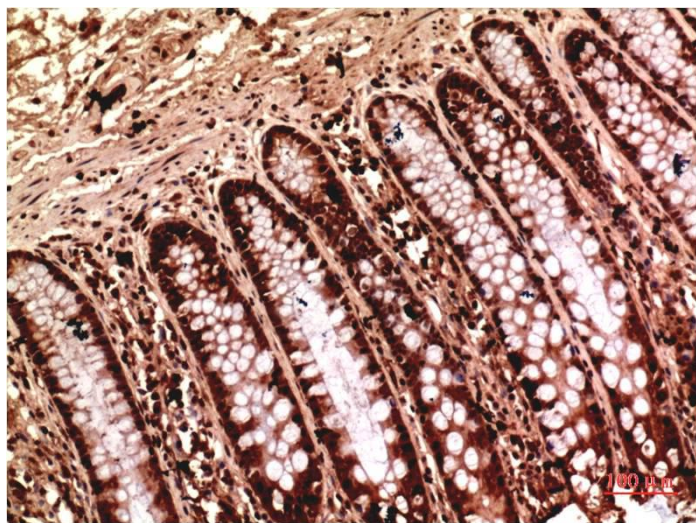
## Preparation & Storage

Storage	Store at -20°C. Stable for one year from the date of shipment.
Shipping	Bule Ice

## Experimental Data



Western blot analysis of 1)Jurkat Cell Lysate, 2)Hela Cell Lysate, 3)Rat Brain Tissue Lysate, 4)Mouse Brain Tissue Lysate using Gamma Tubulin Mouse mAb diluted at 1:2000.



Immunohistochemical analysis of paraffin-embedded Human Colon Carcinoma Tissue using Gamma Tubulin Mouse mAb diluted at 1:200.

## Background

$\gamma$ -tubulin forms complexes of two different sizes:  $\gamma$ -tubulin small complex ( $\gamma$ -TuSC) and the larger  $\gamma$ -tubulin ring complex ( $\gamma$ -TuRC).