

LC3A Mouse Monoclonal Antibody(5G10)

Catalog No.: RA10135

Basic Information

Information

Reactivity	H,M,R
Immunogen	Synthetic Peptide
Host	Mouse
Isotype	IgG1
Storage Buffer & Condition	1mg/ml in PBS, pH 7.4, containing 0.02% sodium azide and 50% glycerol.
Observed MW	14,16KD

Applications

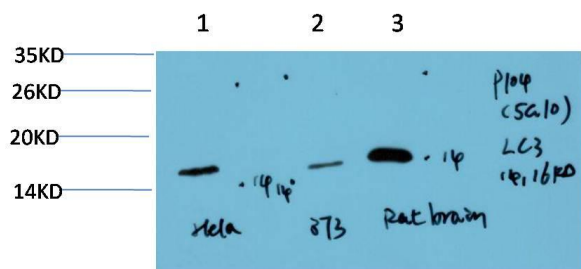
Recommended Dilution

WB	1:1,000-2,000
IHC	1:100-200

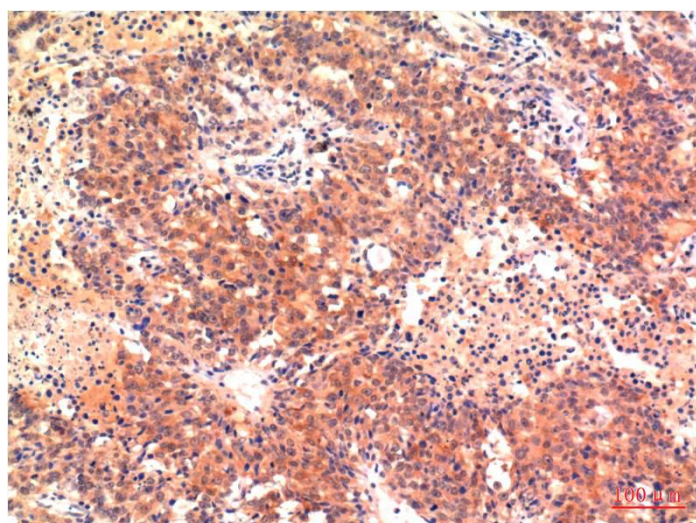
Preparation & Storage

Storage	Store at -20°C. Stable for one year from the date of shipment.
Shipping	Bule Ice

Experimental Data



Western blot analysis of 1)Hela Cell Lysate, 2)3T3 Cell Lysate, 3)Rat Brain Tissue Lysate using LC3A Mouse mAb diluted at 1:1000.



Immunohistochemical analysis of paraffin-embedded Human Hepatocarcinoma Tissue using LC3A Mouse mAb diluted at 1:200.

Background

Three human LC3 isoforms (LC3A, LC3B, and LC3C) undergo post-translational modifications during autophagy. Cleavage of LC3 at the carboxy terminus immediately following synthesis yields the cytosolic LC3-I form.