

# Ubiquitin Mouse Monoclonal Antibody(6G6)

Catalog No.: RA10133

## Basic Information

### Information

Reactivity	ALL
Immunogen	Synthetic Peptide
Host	Mouse
Isotype	IgG1
Storage Buffer & Condition	1mg/ml in PBS, pH 7.4, containing 0.02% sodium azide and 50% glycerol.
Observed MW	ALL

### Applications

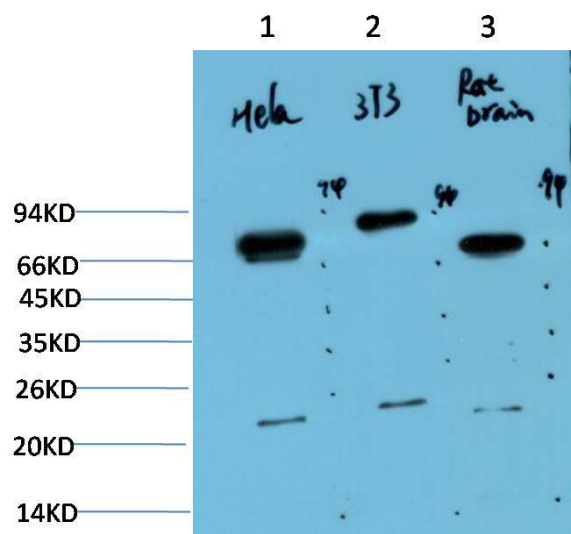
### Recommended Dilution

WB	1:1,000-2,000
IHC	1:100-200

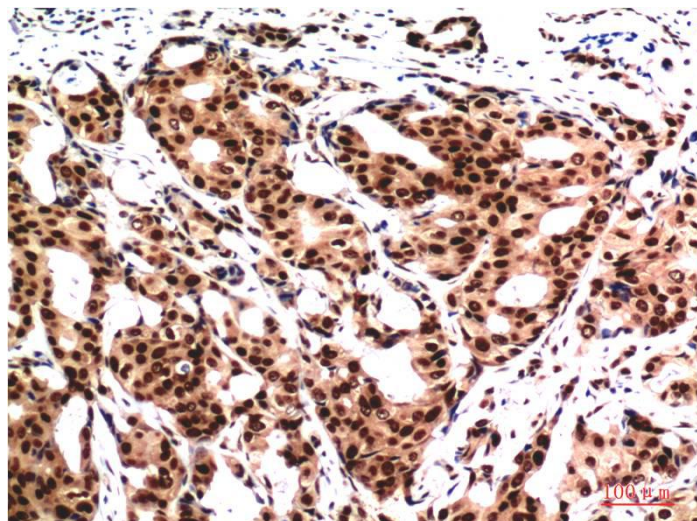
## Preparation & Storage

Storage	Store at -20°C. Stable for one year from the date of shipment.
Shipping	Bule Ice

## Experimental Data



Western blot analysis of 1)Hela Cell Lysate, 2)3T3 Cell Lysate, 3)Rat Brain Tissue Lysate using Ubiquitin Mouse mAb diluted at 1:1000.



Immunohistochemical analysis of paraffin-embedded Human Breast Carcinoma Tissue using Ubiquitin Mouse mAb diluted at 1:200.

## Background

Ubiquitin is a conserved polypeptide unit that plays an important role in the ubiquitin-proteasome pathway. Ubiquitin can be covalently linked to many cellular proteins by the ubiquitination process, which targets proteins for degradation by the 26S proteasome.