

# GSK 3 $\beta$ Mouse Monoclonal Antibody(2C6)

Catalog No.: RA10121

## Basic Information

### Information

|                            |  |
|----------------------------|--|
| Reactivity                 | H,M,R  |
| Immunogen                  | Synthetic Peptide  |
| Host                       | Mouse  |
| Isotype                    | IgG1   |
| Storage Buffer & Condition | 1mg/ml in PBS, pH 7.4, containing 0.02% sodium azide and 50% glycerol. |
| Observed MW                | 46KD   |

### Applications

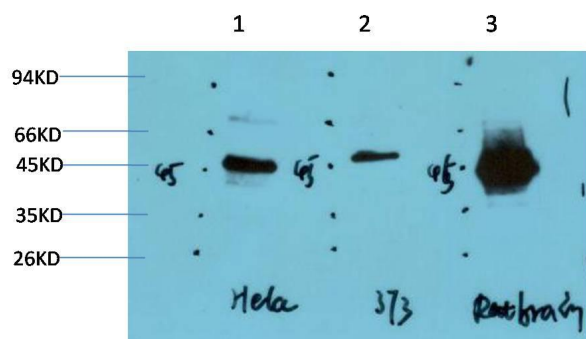
### Recommended Dilution

|     |               |
|-----|---------------|
| WB  | 1:1,000-2,000 |
| IHC | 1:100-200     |

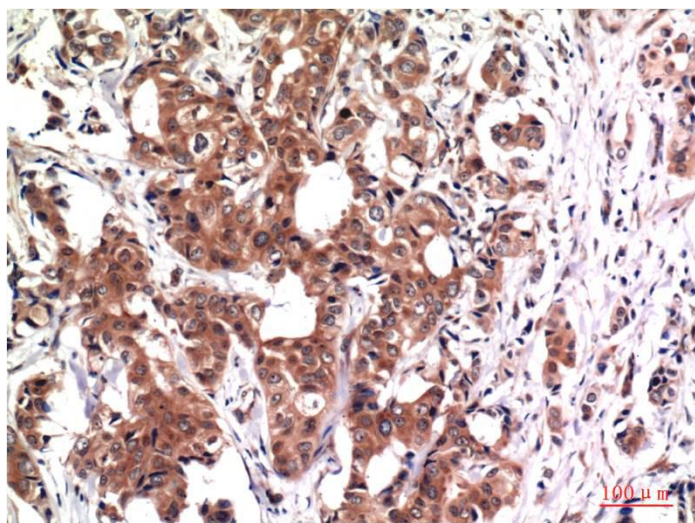
## Preparation & Storage

|          |  |
|----------|--|
| Storage  | Store at -20°C. Stable for one year from the date of shipment. |
| Shipping | Bule Ice   |

## Experimental Data



Western blot analysis of 1)Hela Cell Lysate, 2)3T3 Cell Lysate, 3)Rat Brain Tissue Lysate using GSK3β Mouse mAb diluted at 1:1000..



Immunohistochemical analysis of paraffin-embedded Human Breast Carcinoma Tissue using GSK3β Mouse mAb diluted at 1:200.

## Background

Glycogen synthase kinase 3 beta, also known as GSK3B, is an enzyme that in humans is encoded by the GSK3B gene.