

CBARA1 MICU1 Mouse Monoclonal Antibody(Mix-mA)

Catalog No.: RA10025

Basic Information

Information

Reactivity	H,M,R
Immunogen	Recombinant Protein
Host	Mouse
Isotype	IgG1
Storage Buffer & Condition	1mg/ml in PBS, pH 7.4, containing 0.02% sodium azide and 50% glycerol.
Observed MW	55KD

Applications

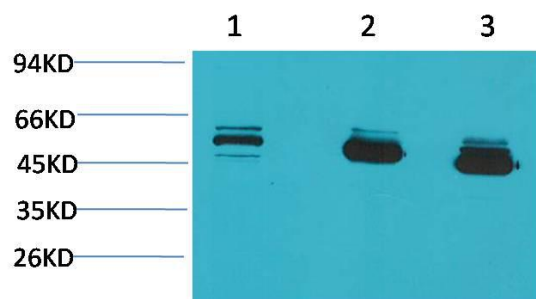
Recommended Dilution

WB	1:1,000-2,000
IHC	1:100-200

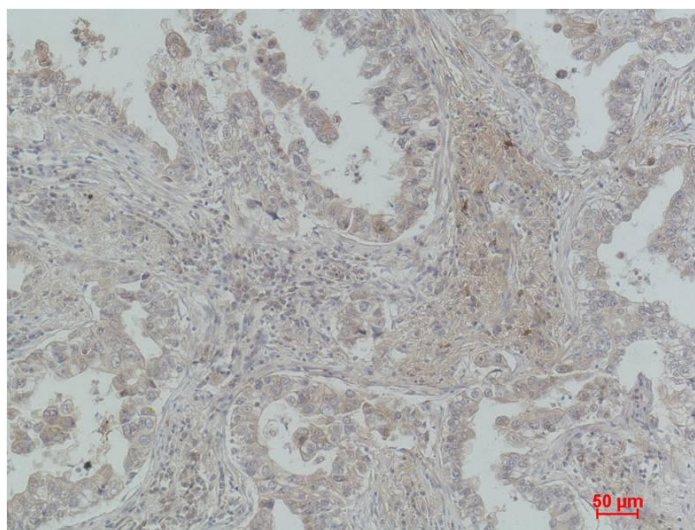
Preparation & Storage

Storage	Store at -20°C. Stable for one year from the date of shipment.
Shipping	Bule Ice

Experimental Data



Western blot analysis of 1)MCF7, 2)Mouse Brain Tissue, 3)Rat Brain Tissue with CBARA1/MICU1 Mouse mAb diluted at 1:2,000.



Immunohistochemical analysis of paraffin-embedded Human Lung Carcinoma using CBARA1/MICU1 Mouse mAb diluted at 1:200.

Background

CBARA1/MICU1 is a mitochondrial protein associated to the mitochondrial inner membrane that is comprised of two EF hand helix-loop-helix motifs. Key regulator of mitochondrial calcium uptake required for calcium entry into mitochondrion.