

Cytochrome C Mouse Monoclonal Antibody(4B10)

Catalog No.: RA10021

Basic Information

Information

| | |
|----------------------------|--|
| Reactivity | H,M,R |
| Immunogen | Recombinant Protein |
| Host | Mouse |
| Isotype | IgG1 |
| Storage Buffer & Condition | 1mg/ml in PBS, pH 7.4, containing 0.02% sodium azide and 50% glycerol. |
| Observed MW | 14KD |

Applications

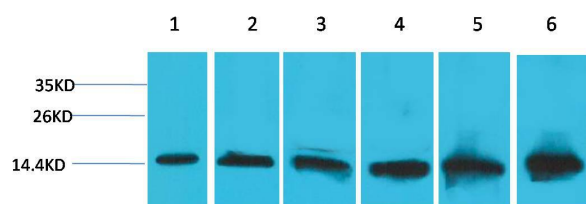
Recommended Dilution

| | |
|-----|---------------|
| WB | 1:1,000-5,000 |
| IHC | 1:500-1,000 |

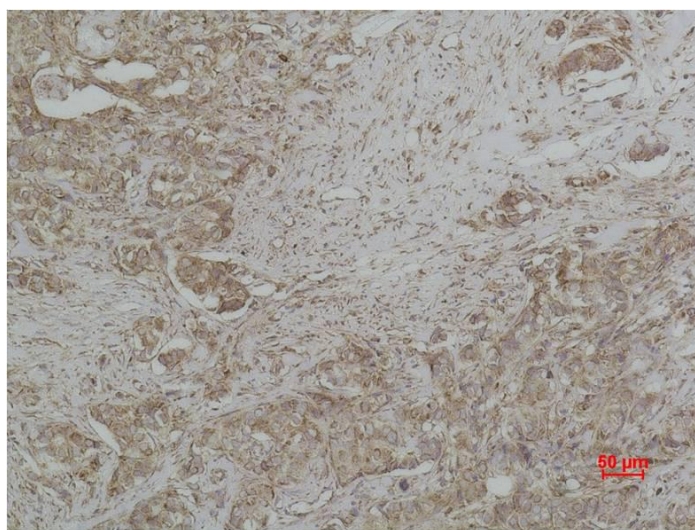
Preparation & Storage

| | |
|----------|--|
| Storage | Store at -20°C. Stable for one year from the date of shipment. |
| Shipping | Bule Ice |

Experimental Data



Western blot analysis of 1)Hela, 2)293T, 3)3T3, 4)Mouse Liver Tissue, 5)Rat Liver Tissue, 6)Rat Kidney Tissue, with Cytochrome C Mouse mAb diluted at 1:2,000.



Immunohistochemical analysis of paraffin-embedded Human Breast carcinoma using Cytochrome C Mouse mAb diluted at 1:500.

Background

The cytochrome complex, or cyt c is a small hemeprotein found loosely associated with the inner membrane of the mitochondrion. It belongs to the cytochrome c family of proteins..