

# Progesterone Receptor Mouse Monoclonal Antibody(Z15)

## Catalog No.: RA10007

### Basic Information

#### Information

Reactivity	H,M,R
Immunogen	Synthetic Peptide
Host	Mouse
Isotype	IgG1
Storage Buffer & Condition	1mg/ml in PBS, pH 7.4, containing 0.02% sodium azide and 50% glycerol.
Observed MW	94-120KD

#### Applications

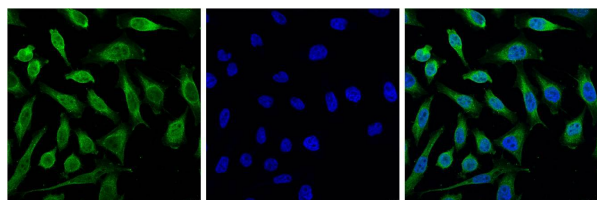
#### Recommended Dilution

IHC	1:200
-----	-------

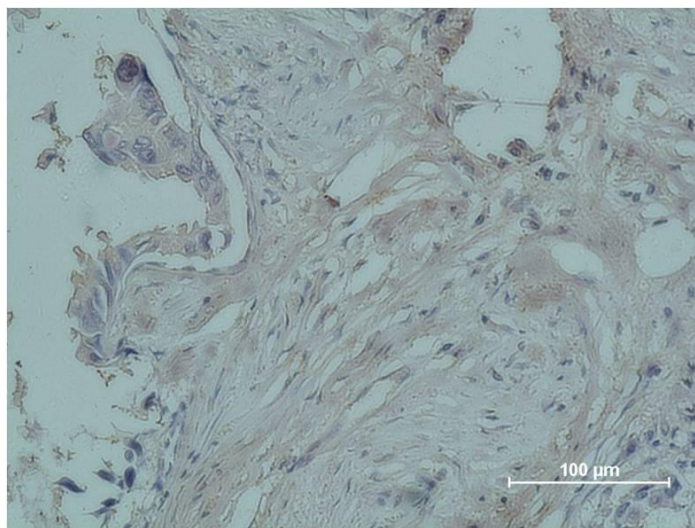
#### Preparation & Storage

Storage	Store at -20°C. Stable for one year from the date of shipment.
Shipping	Bule Ice

## Experimental Data



IF analysis of HeLa with Progesterone Receptor Mouse Monoclonal Antibody (Left) and DAPI (Right) diluted at 1:100.



Immunohistochemical analysis of paraffin-embedded Human breast carcinoma using Progesterone Receptor Mouse Monoclonal Antibody diluted at 1:500.

## Background

The steroid hormones and their receptors are involved in the regulation of eukaryotic gene expression and affect cellular proliferation and differentiation in target tissues. Human progesterone receptor (PR) is expressed as two forms: the full length PR-B and the short form PR-A. PR-A lacks the first 164 amino acid residues of PR-B.