

Flotillin-1 Mouse Monoclonal Antibody(6C10)

Catalog No.: RA10006

Basic Information

Information

Reactivity	M,R
Immunogen	Synthetic Peptide
Host	Mouse
Isotype	IgG1
Storage Buffer & Condition	1mg/ml in PBS, pH 7.4, containing 0.02% sodium azide and 50% glycerol.
Observed MW	49KD

Applications

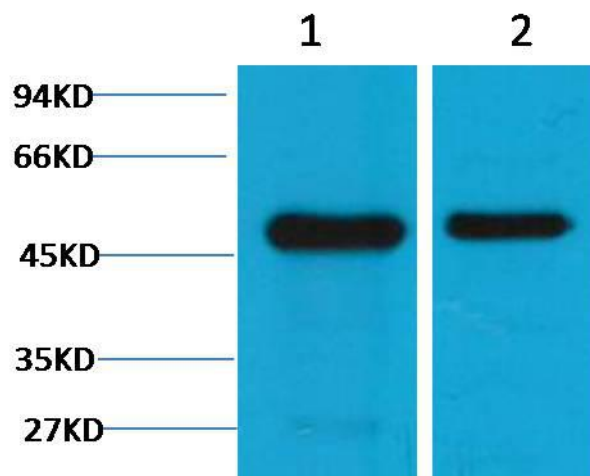
Recommended Dilution

WB	1:1,000-2,000
----	---------------

Preparation & Storage

Storage	Store at -20°C. Stable for one year from the date of shipment.
Shipping	Bule Ice

Experimental Data



Western blot analysis of 1)Mouse Brain Tissue , 2)Rat Brain tissue with Flotillin-1 Mouse Monoclonal Antibody diluted at 1:2,000.

Background

Two flotillin members have been described, flotillin-1 and flotillin-2. May act as a scaffolding protein within caveolar membranes, functionally participating in formation of caveolae or caveolae-like vesicles.