

# **$\alpha$ skeletal muscle actin Mouse Monoclonal Antibody(4B11)**

## **Catalog No.: RA10001**

### **Basic Information**

#### **Information**

<b>Reactivity</b>	H,M,R
<b>Immunogen</b>	Synthetic Peptide
<b>Host</b>	Mouse
<b>Isotype</b>	IgG1
<b>Storage Buffer &amp; Condition</b>	1mg/ml in PBS, pH 7.4, containing 0.02% sodium azide and 50% glycerol.
<b>Observed MW</b>	42KD

#### **Applications**

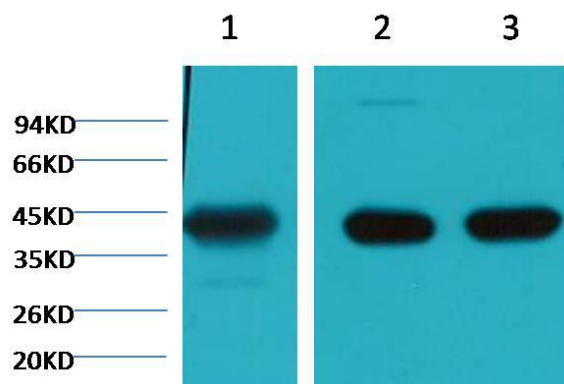
#### **Recommended Dilution**

<b>WB</b>	1:5,000-10,000
<b>IHC</b>	1:200-500
<b>IP</b>	1:200

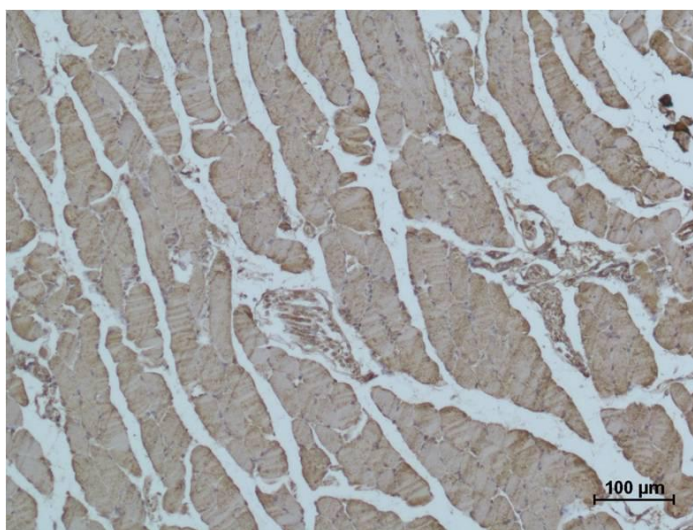
#### **Preparation & Storage**

<b>Storage</b>	Store at -20°C. Stable for one year from the date of shipment.
<b>Shipping</b>	Bule Ice

## Experimental Data



Western blot analysis of 1)Hela, 2)Mouse Brain tissue, 3)Rat Brain tissue with  $\alpha$  skeletal muscle actin Mouse Monoclonal Antibody diluted at 1:20,000.



Immunohistochemical analysis of paraffin-embedded Mouse Skeletal Muscle Tissue using  $\alpha$  skeletal muscle actin  $\alpha$  skeletal muscle actin Mouse Monoclonal Antibody diluted at 1:500.

## Background

Actin, alpha skeletal muscle is a protein that in humans is encoded by the ACTA1 gene. Actin alpha 1 which is expressed in skeletal muscle is one of six different actin isoforms which have been identified. Actins are highly conserved proteins that are involved in cell motility, structure and integrity. Alpha actins are a major constituent of the contractile apparatus.